



TECHNIQUE



PLEX Technical Enterprise Ltd. (Przedsiębiorstwo Techniczne PLEX Sp. z o.o.) has been operating successfully since 1991.

From the beginning, we have specialized in thermoforming plastics, processing aluminium and ferrous metals. In response to the needs of the market, the purpose of our products has been related to visual information and advertising of light for many years. Over time, our services have been expanded to include product design for industry, and now it is a line of our activities parallel to the advertising industry.

We have social and technical facilities with an area of 1800m2 and a machinery park with full equipment. Our team consists of experienced management staff and specialists from various fields: computer designers, plastics makers, welders, locksmiths, painters, electricians, printers and fitters.

Our products and services have an excellent reputation, taking into account the professionalism and quality of execution as well as attractive prices.

Our offer is addressed to large and medium-sized companies as well as individual investors with whom we would like to establish cooperation. We are looking forward to cooperate with you.



COOPERATION

Our services have been used by inter alia such companies as:

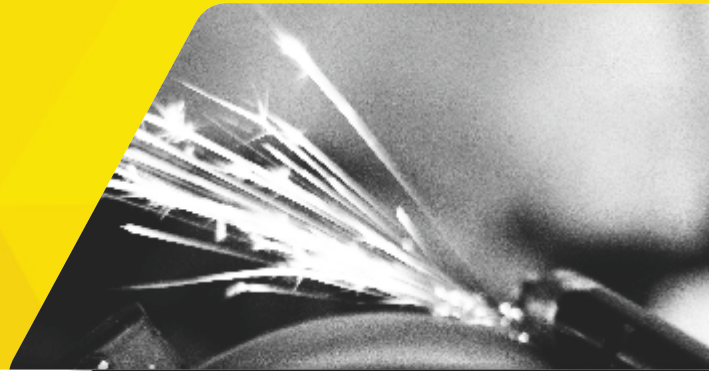
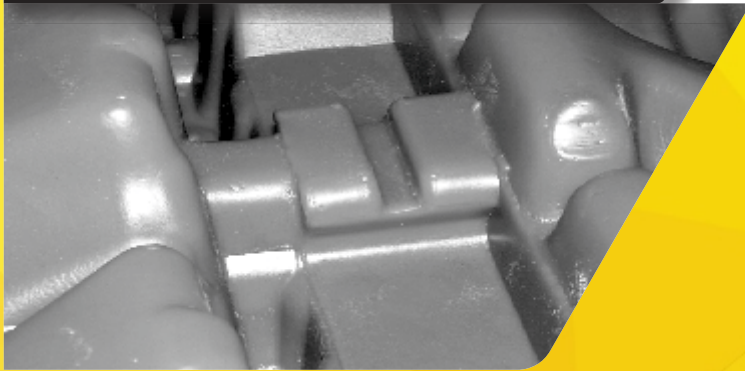
Author, Bank BGŻ, Bank Śląski, Bank BPH, Bank ING, Bank Spółdzielczy, Bartek, Browary: Warka, Tyskie, Żywiec, Blumenbecker, British Petroleum, Canon, Castolin Eutectic, Cewe Color, Classen, ERA GSM Euronet, Fortuna, Fotojoker ISUZU Motor Polska, M1, SKOK, Magneti Marelli, Makita, Nikon, NEWAG, Nivea NGK, PLUS GSM, OBRUM, Opel, Orlen, Poczta Polska, Parker, PGZ, POCH, Politechnika Śląska, Port Lotniczy Balice, Phillip Morris, Real, Rosnieft, Seat, Siemens, Schindler, SORAYA, SUPERBET, Tauron, Technomex, Yamaha

MILLING



LASER CUTTING

THERMOFORMING



TREATMENT

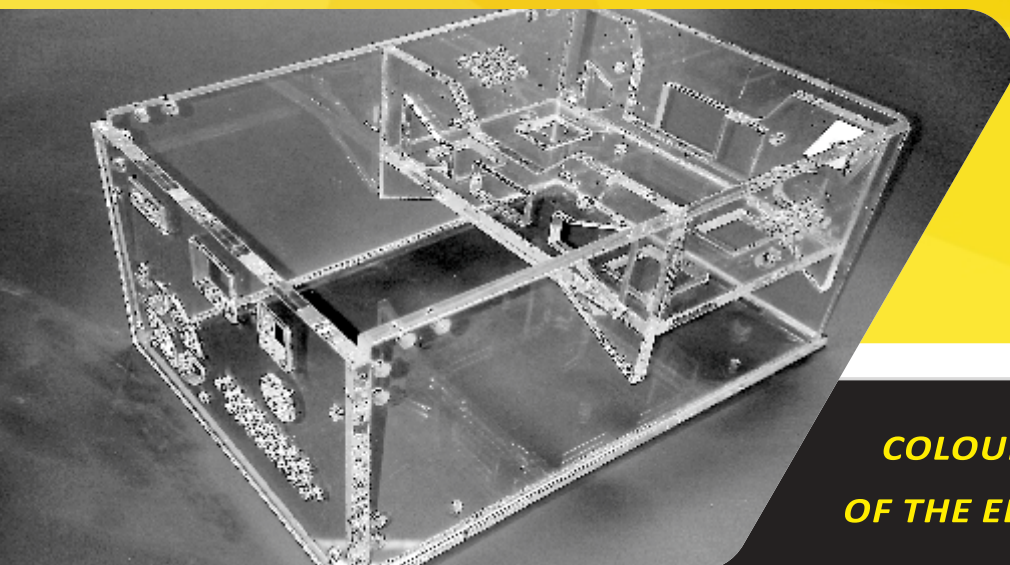
WELDING



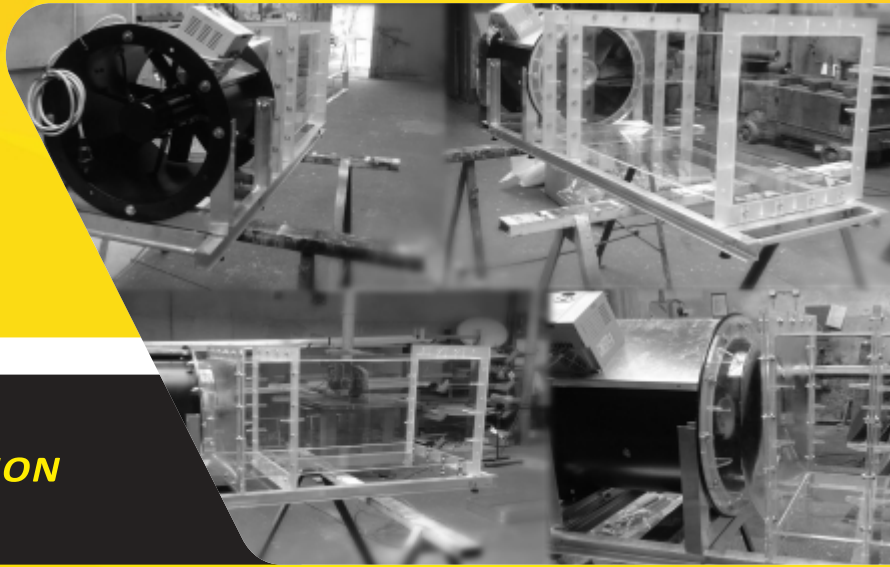


**MODULAR LARGE
TECHNICAL PARTITIONS**

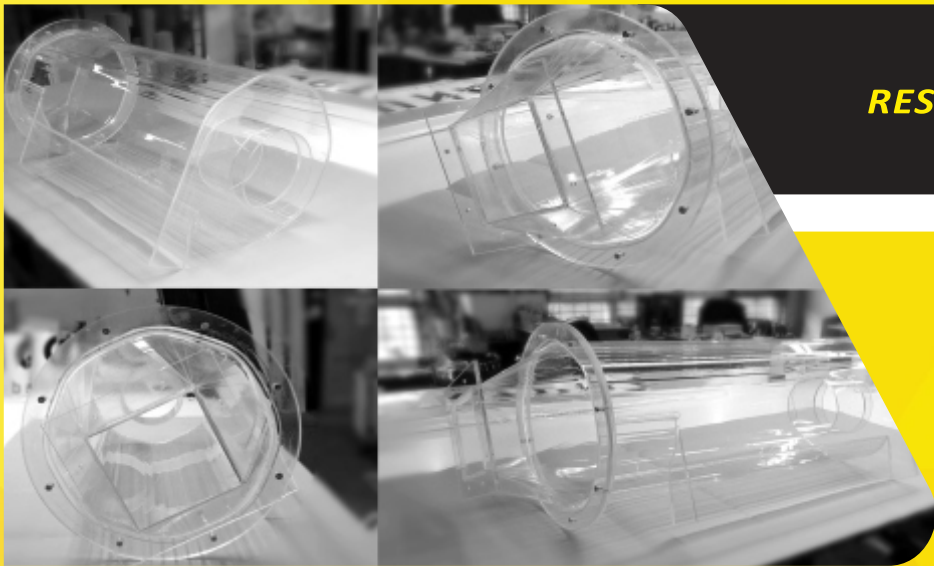
**MODULAR SMALL
TECHNICAL PARTITIONS**



**COLOURLESS HOUSING
OF THE ELECTRONIC DEVICE**



RESEARCH POSITION



RESEARCH MODELS



HEADLIGHTS COVERS



**TRANSPORT PACKAGE
FOR AUDIO-TV EQUIPMENT**

**THERMOFORMED CONTAINERS
WITH APPROPRIATE GREATER STRENGTH**



**COVERS AND HOUSINGS
OF THERMOPLASTIC DEVICES**

THERMOFORMED COVER





***COLOURLESS CONTAINERS
FOR THE GASTRONOMY INDUSTRY,
MADE OF MATERIALS ATTESTED
FOR CONTACT WITH FOOD***



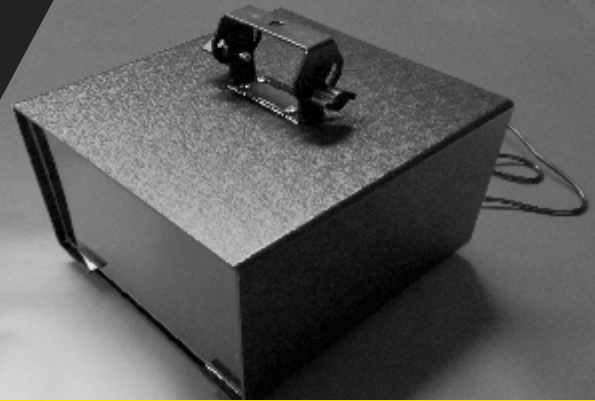
CONTAINERS OF VARIOUS APPLICATION





DEVICE COVER

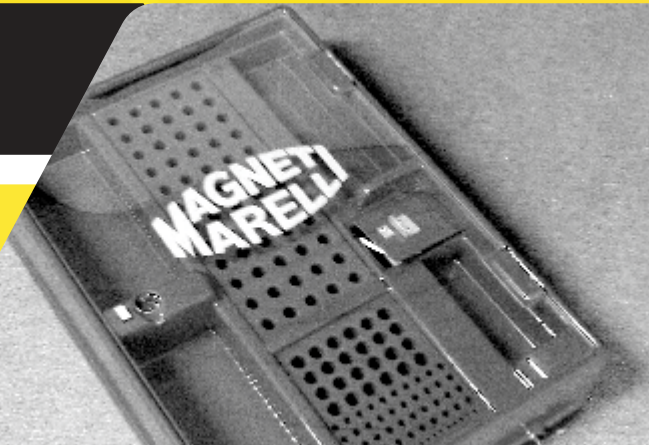
PROJECTOR HOUSING



ELEMENT COVER



BULBS CONTAINER



**ILLUMINATED INFORMATION
PYLONS**

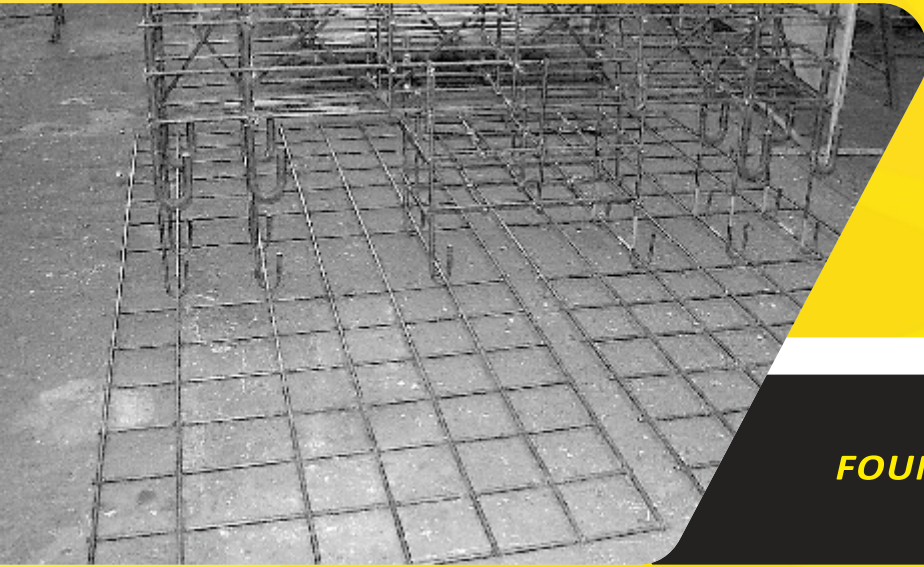


**ILLUMINATED INFORMATION
PYLONS**



**ILLUMINATED INFORMATION
PYLONS**





FOUNDATION BASKET

**ELEMENTS
MADE OF ALUMINIUM SHEET**



STEEL STRUCTURE



**BALUSTRADES
AND STAIR HANDRAILS**



**BALUSTRADES
AND STAIR HANDRAILS**



**BALUSTRADES
AND STAIR HANDRAILS**

PLEX

TECHNIQUE

THEY TRUSTED:



We are looking forward to cooperate with you

Izabela Kędzierska

Business Development Manager

tel. +48 519 118 419 izabela.kedzierska@plex.com.pl



44-100 GLIWICE
ul. Chorzowska 58



tel. +48 32 270 35 48
tel. +48 608 030 190



www.plex.com.pl
plex@plex.com.pl

